

## Solid Wire Rope Thimble Crosby S-412

### Product information



Fits pin for open wire rope socket, boom pendant clevis and wedge socket ... [Read more](#)

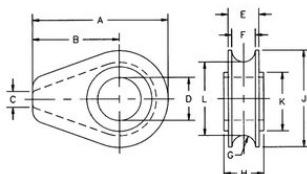
**Features:** Greater protection against wear and deformation of the wire rope eye giving longer service life.

**Material:** Cast Ductile Iron.

**Marking:** Manufacturer's symbol.

## Solid Wire Rope Thimble Crosby S-412

### Blueprint



### Lifting table

Part code	Rope Ø range mm	A mm	B mm	C mm	D mm	D tolerance mm	E mm	F mm	G mm	H mm	J mm	K mm	L mm	Weight kg
123101300220	13	71.5	44.5	6.35	26.9	+/-5%	19.1	14.2	7.1	22.4	54	41.4	39.6	0.28
123101600220	16	119	76	9.65	33.3	+/-4%	26.9	20.6	10.4	28.7	86	57	65	1
123102000220	18-20	119	76	9.65	38.1	+/-3%	26.9	20.6	10.4	35.1	86	57	65	1.05
123102200220	22	154	97	12.7	44.5	+/-3%	35.1	26.9	13.5	41.4	114	82.5	87.5	2.47
123102600220	24-26	154	97	12.7	54	+/-3%	35.1	26.9	13.5	46	114	82.5	87.5	2.38
123103000220	28-30	184	116	16	60.5	+/-2%	44.5	33.3	16.8	52.5	137	98.5	103	4.21
123103500220	32-35	184	116	16	67	+/-2%	49.3	38.9	19.8	58.5	137	98.5	105	4.45