

## Lifting Eye Nut DIN 582 Electro Galvanized

### Product information



**Material:** Steel C15E

**Marking:** According to standard, WLL, manufacturer C15, thread & CE

**Finish:** Electro galvanized.

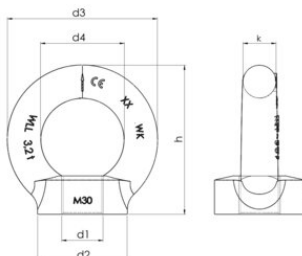
**Standard:** DIN 582

**Warning:** The lifting eyes shall be screwed tight against the surface. When two lifting eyes are used their mutual position shall result in the two eyes at the same level. Larger angle between the slings than 90° are not tolerated. Lifting eyes can not be assembled against a surface that differ essentially from a surface perpendicular to the direction of the lift.

**Safety factor:** 6:1

## Lifting Eye Nut DIN 582 Electro Galvanized

### Blueprint



### Lifting table

Part code	WLL ton	Thread	d1 mm mm	d2 mm mm	d3 mm mm	d4 mm mm	h mm mm	k mm mm	Weight kg/100pc
421100010070	0.14	M8	M8	20	36	20	36	8	5
421100020070	0.23	M10	M10	25	45	25	45	10	9
421100030070	0.34	M12	M12	30	54	30	53	12	16
421100120070	1.2	M20	M20	40	72	40	71	16	36
421100180070	1.8	M24	M24	50	90	50	90	20	72
421100460070	4.6	M36	M36	75	126	70	128	28	208
421100630070	6.3	M42	M42	85	144	80	147	32	311
421100860070	8.6	M48	M48	100	166	90	168	38	502