

Thimble K2 - Heavy Duty Stub-end

Product information

Suitable for wire rope.

... [Read more](#)



Material: Mild steel

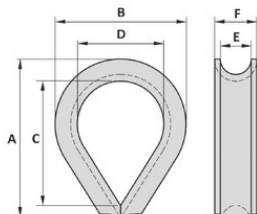
Temperature range: -20°C up to +200°C

Finish: Galvanized

Note: Tolerance : Forged parts $\pm 5\%$

Thimble K2 - Heavy Duty Stub-end

Blueprint



Lifting table

Part code	Rope Ø range mm	A mm	B mm	C mm	D, mm	E mm	F mm	Weight kg/100pc
123100800360	8	50.8	42	35	22	9	14	8.2
123101000360	9-10	63.5	50	45	30	11	16	10
123101200360	11-12	76.2	50	55	35	13	18	20
123101300360	13	88.9	73	65	45	15	20	26
123101500360	14-15	101.6	75	75	50	17	22	36
123101700360	16-17	114.3	85	80	53	19	25	50
123101900360	18-19	127	100	90	60	21	29	60
123102100360	20-21	139.7	110	95	65	23	33	70
123102300360	22-23	152.4	115	120	70	25	34	100
123102700360	24-27	177.8	135	140	80	30	38	160
123103000360	28-30	203.2	155	160	100	33	44	180
123103400360	31-34	228.6	175	185	115	38	49	350
123103700360	35-37	254	190	195	120	41	52	440
123104200360	38-42	279.4	210	215	130	46	60	520
123104700360	43-47	304.8	245	250	145	52	65	730
123105400360	48-54	355.6	260	290	155	60	72	1,100
123106300360	55-63	431.8	310	370	190	70	84	1,600
123107300360	64-73	482.6	350	420	230	81	119	2,750
123108300360	74-83	558.8	395	480	255	92	130	3,650
123109500360	84-95	606.9	430	540	280	105	145	4,400
123110900360	96-109	660.4	450	580	285	120	155	4,700