

Wedge Socket for Lifts

Product information



When fitting the rope to the socket as much slack as possible should be removed from the system in order to maximise the available eye bolt adjustment. The load should then be applied to the assembly and the wedge observed to seat correctly in the socket body. A single DIN 1142 wire rope grip should then be fitted across the two parts of rope near to the socket body. This, along with the split pin fitted into the wedge, ensures that the wedge cannot become displaced in a slack rope condition. [... Read more](#)

Features: High Quality Lift Suspension Wedge Socket

Material: Steel

Marking: According to standard, Size

Finish: Galvanized

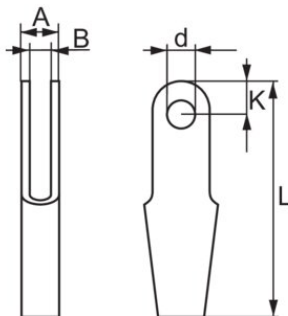
Standard: EN 13411-7

DIN 15315 replaced by EN 13411-7

Safety factor: 10:1

Wedge Socket for Lifts

Blueprint



Lifting table

Part code	Rope Ø range mm	Finish	A mm	B mm	K mm	L mm	D, mm	Weight kg
121500800012	6-8	Galvanized	22	14	20	150	12	0.5
121501100012	9-11	Galvanized	29	17	26	190	16	1.1
121501400012	12-14	Galvanized	38	22	32	230	18	2.1
121501700012	15-17	Galvanized	45	25	36	260	22	3.5
121502000012	18-20	Galvanized	51	27	40	300	25	5.5