

Swing Block

Product information



The swing block is a pulley designed for general pulling applications using wire rope or fibre rope. Its opening side plates allow the rope to be inserted without threading, supporting efficient setup in temporary or changing rigging configurations. Suitable for manual handling, positioning, and redirection of loads.

Best for:

- General pulling and rope redirection tasks
- Applications requiring quick rope installation and removal

Product benefits:

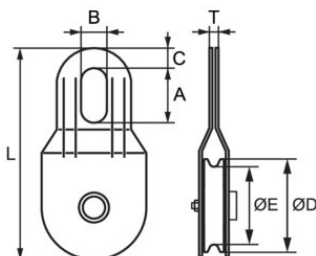
- Opening side plates enable fast rope insertion without re-threading
- Compatible with both wire rope and fibre rope for flexible use
- Oval eye allows connection to hooks, shackles, or fittings
- Simple mechanical design supports reliable operation in field conditions [... Read more](#)

Material: Cover plates of construction steel, polyamid sheave, shaft in stainless steel. KSW3-N has a countersunk grease fitting in the shaft.

Finish: Cover plates are galvanized.

Swing Block

Blueprint



Lifting table

Part code	Breaking Load ton	Rope Ø range mm	A mm	B mm	C mm	D mm	E mm	L mm	T mm	Weight kg
494101500010	1	15	48	24	22	80	70	190	11	1
494101800010	2	18	56	28	31	110	100	255	11	1.9
494102800010	3	28	60	42	31	150	140	350	14	4