

Closed Spelter Socket CSS

Product information



The Ropeblock closed spelter socket CSS designed with mechanical values (Charpy-V > 42 joule / - 20° C) for tough and low temperature use. All sockets have a 100% efficiency on the MBL of the steel wire rope but are limited to the MBL of the socket.

The CSS sockets are Type Approved by DNV and Lloyd's Register.

CSS 296 until CSS 201 only available with hot dipped galvanized finish [... Read more](#)

Material: Quenched and tempered cast steel.

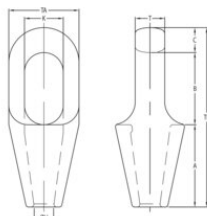
Marking: CE-marked

Temperature range: - 40°C to + 110°C - Use at higher temperatures possible with reduction of WLL.

Finish: Hot dipped Galvanized (G) or painted blue (P).

Closed Spelter Socket CSS

Blueprint



Lifting table

| Part code | Rope Ø range mm | MBL ton | Finish | Strand Ø mm | A mm | B mm | C mm | Ø H mm mm | K mm | T mm | TA mm mm | TL mm mm | Weight kg |
|--------------|-----------------|---------|------------|-------------|------|------|------|-----------|------|------|----------|----------|-----------|
| 122100700182 | 6-7 | 8 | Galvanized | - | 50 | 40 | 11 | 9,1 | 22 | 13 | 37 | 101 | 0.3 |
| 122101000182 | 8-10 | 12 | Galvanized | - | 57 | 48 | 14 | 12,6 | 25 | 18 | 43 | 119 | 0.5 |
| 122101300182 | 11-13 | 20 | Galvanized | - | 64 | 59 | 17,5 | 14,6 | 30 | 23 | 51 | 140 | 0.7 |
| 122101600182 | 14-16 | 25 | Galvanized | 13 | 76 | 65 | 21 | 18,1 | 36 | 26 | 67 | 162 | 1.4 |
| 122101900182 | 18-19 | 40 | Galvanized | 14-16 | 89 | 78 | 27 | 21,9 | 42 | 32 | 76 | 194 | 2.2 |
| 122102200182 | 20-22 | 55 | Galvanized | 18-19 | 101 | 90 | 33 | 24,9 | 47 | 38 | 92 | 224 | 3.8 |
| 122102600182 | 23-26 | 75 | Galvanized | 20-22 | 114 | 103 | 36 | 28,8 | 57 | 44 | 104 | 253 | 5.4 |
| 122103000182 | 27-30 | 90 | Galvanized | 23-26 | 127 | 116 | 39 | 32,9 | 65 | 51 | 114 | 282 | 7 |
| 122103600182 | 31-36 | 125 | Galvanized | 27-28 | 139 | 130 | 43 | 39,2 | 71 | 57 | 126 | 312 | 10 |
| 122103900182 | 37-39 | 150 | Galvanized | 30-32 | 152 | 155 | 51 | 42,5 | 81 | 63 | 136 | 358 | 13 |
| 122104200182 | 40-42 | 170 | Galvanized | 33-35 | 165 | 171 | 54 | 45,5 | 83 | 70 | 146 | 390 | 17 |
| 122104800182 | 43-48 | 225 | Galvanized | 36-40 | 190 | 198 | 55 | 52,5 | 93 | 76 | 171 | 443 | 26 |
| 122105400182 | 49-54 | 280 | Galvanized | 42-45 | 216 | 224 | 62 | 59,1 | 100 | 82 | 193 | 502 | 37 |
| 122106000182 | 55-60 | 360 | Galvanized | 46-48 | 228 | 247 | 73 | 65,1 | 112 | 92 | 216 | 548 | 50 |
| 122106800182 | 61-68 | 425 | Galvanized | 50-54 | 248 | 270 | 79 | 73,4 | 140 | 102 | 241 | 257 | 66 |
| 122107500182 | 69-75 | 460 | Galvanized | 56-62 | 279 | 286 | 79 | 79,4 | 159 | 124 | 273 | 644 | 91 |
| 122108000182 | 76-80 | 560 | Galvanized | 64-67 | 315 | 298 | 83 | 88,2 | 171 | 133 | 292 | 696 | 117 |
| 122108600182 | 81-86 | 625 | Galvanized | 69-76 | 330 | 311 | 102 | 92,4 | 184 | 146 | 311 | 743 | 125 |
| 122109300182 | 87-93 | 720 | Galvanized | 78-86 | 356 | 330 | 102 | 98,8 | 197 | 159 | 330 | 788 | 176 |
| 122110200182 | 94-102 | 875 | Galvanized | 88-96 | 381 | 356 | 108 | 107,8 | 216 | 178 | 362 | 845 | 228 |
| 122111500182 | 108-115 | 1,200 | Galvanized | 98-110 | 450 | 425 | 125 | 129,5 | 235 | 190 | 405 | 1,000 | 323 |
| 122113000182 | 120-130 | 1,400 | Galvanized | 112-124 | 500 | 525 | 125 | 147,1 | 260 | 200 | 450 | 1,150 | 447 |

Closed Spelter Socket CSS

Lifting table

| Part code | Rope Ø range mm | MBL ton | Finish | Strand Ø mm | A mm | B mm | C mm | Ø H mm mm | K mm | T mm | TA mm mm | TL mm mm | Weight kg |
|--------------|-----------------|---------|------------|-------------|------|------|------|-----------|------|------|----------|----------|-----------|
| 122114000182 | 135-140 | 1,600 | Galvanized | 125-132 | 540 | 495 | 150 | 153,9 | 290 | 220 | 520 | 1,185 | 645 |
| 122115300182 | 142-153 | 2,000 | Galvanized | 133-143 | 585 | 530 | 170 | 171,1 | 305 | 240 | 545 | 1,285 | 741 |
| 122116500182 | 154-165 | 2,220 | Galvanized | 144-154 | 630 | 565 | 175 | 185,1 | 330 | 250 | 575 | 1,370 | 860 |
| 122117800182 | 166-178 | 2,500 | Galvanized | 155-166 | 680 | 590 | 180 | 199,1 | 330 | 270 | 595 | 1,450 | 985 |
| 122119100182 | 180-191 | 2,800 | Galvanized | 167-179 | 725 | 620 | 190 | 213 | 350 | 290 | 625 | 1,535 | 1,183 |
| 122120400182 | 192-204 | 3,200 | Galvanized | 180-191 | 775 | 650 | 210 | 228,5 | 395 | 305 | 690 | 1,635 | 1,487 |